

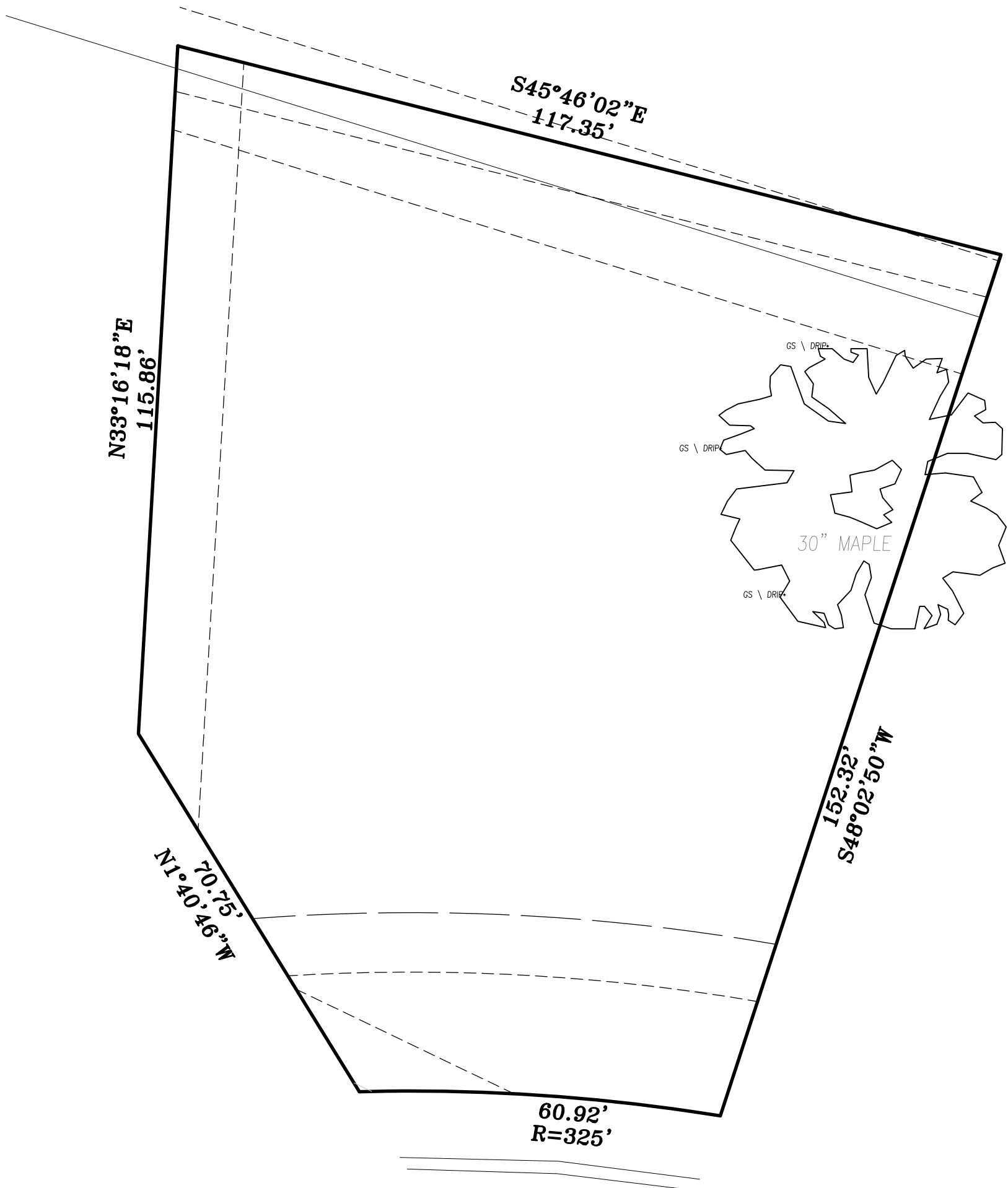
PLOT PLAN

LOT 31
COLTON, FIRST PLAT
10114 W. 152ND TERRACE

SCALE: 1"=20'



RODROCK HOMES

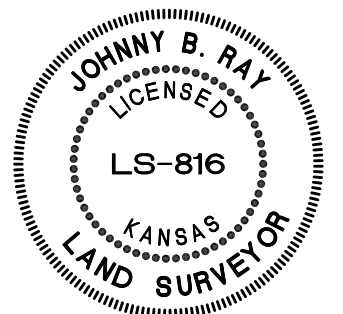


152ND TERRACE

DATE STAKED:
SURVEY CREW:
HOUSE TIES CHK'D:

LEGAL DESCRIPTION:
LOT 31, COLTON, FIRST PLAT, A
SUBDIVISION OF LAND IN THE CITY OF
OVERLAND PARK, JOHNSON COUNTY,
KANSAS.

I, Johnny B. Ray, certify
that this plot plan has
been field verified, and is
in compliance with the
approved subdivision
grading plan unless
otherwise noted.



PLANNING
ENGINEERING
IMPLEMENTATION

PHELPS ENGINEERING, INC
1270 N. Winchester
Olathe, Kansas 66061
(913) 393-1155
Fax (913) 393-1166

PROJECT NO. 160891
DATE: 09/7/16
BY: BJG

Note: This plot plan was
prepared for foundation
construction only.
Contractor is responsible
for verifying all dimensions
and grades prior to
excavation. Not
responsible for unplatted
easements.

CERTIFICATE OF AUTHORIZATION
KANSAS
LAND SURVEYING - LS-82
ENGINEERING - E-391
CERTIFICATE OF AUTHORIZATION
MISSOURI
LAND SURVEYING-2007001128
ENGINEERING-2007005058